


Department of Engineering
Dan Gaillet, P.E., County Engineer

3137 South Liberty Street, Canton, MS 39046
Office (601) 790-2525 FAX (601) 859-3430

MEMORANDUM

April 8, 2019

To: Sheila Jones, Supervisor, District I
Trey Baxter, Supervisor, District II
Gerald Steen, Supervisor, District III
David Bishop, Supervisor, District IV
Paul Griffin, Supervisor, District V

From: Dan Gaillet, P.E. 
County Engineer

Re: Sink Hole
119 Mason Way
Ashbrooke

A sink hole has formed due to the failure of a 24" pipe that carries roadway storm water from Mason Way, along private property at 119 Mason Way.

The Engineering Department has determined that the pipes have separated, in several locations, which is causing dangerous sink holes.

It is the recommendation of the Engineering Department that the Board authorize repairs to ensure that storm water is moved from point-to-point to prevent damage to the roadway and further damage to the storm water system.

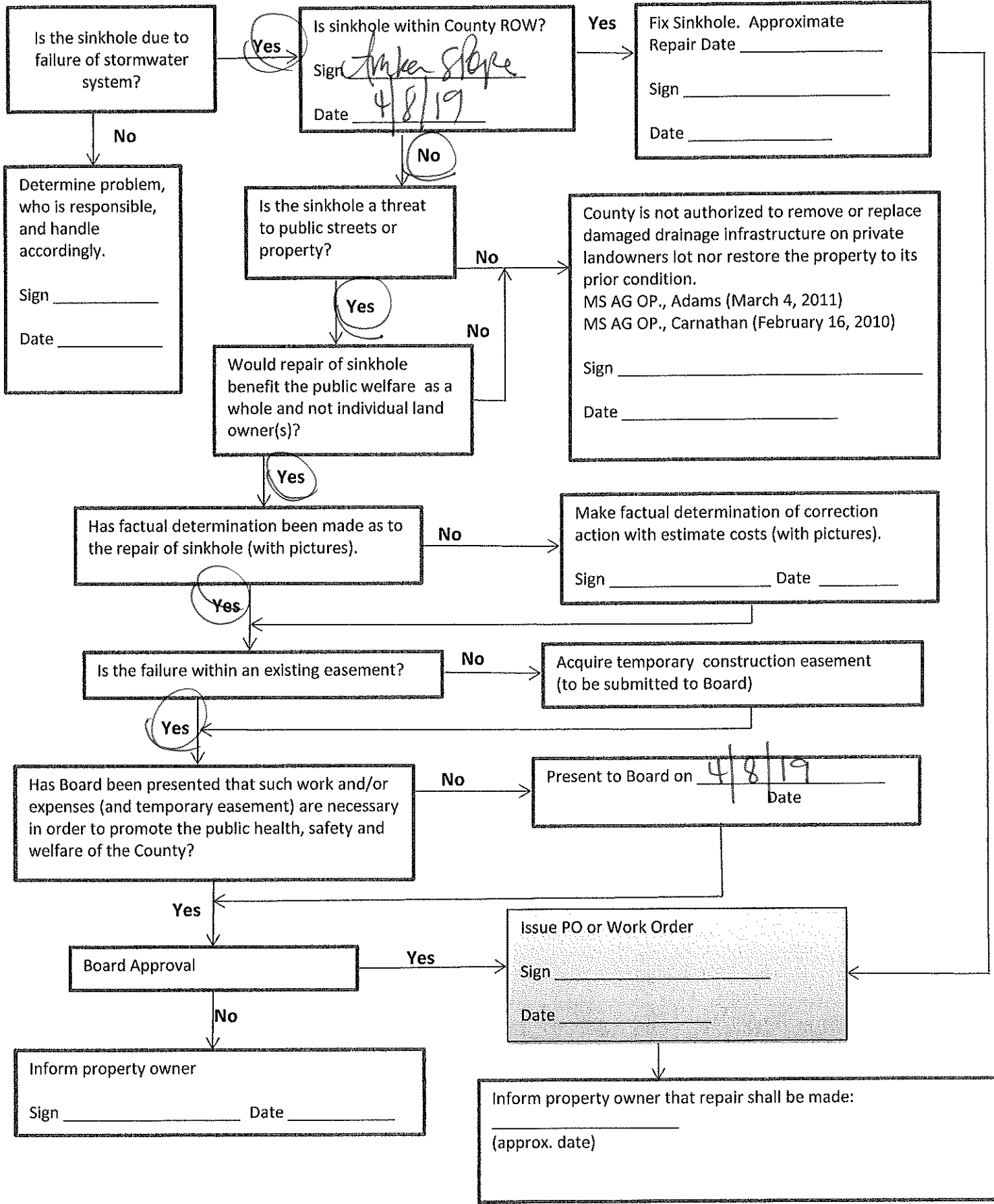
Therefore, it is in the best interest of the County and the public's health, safety and welfare to make the repairs, based on:

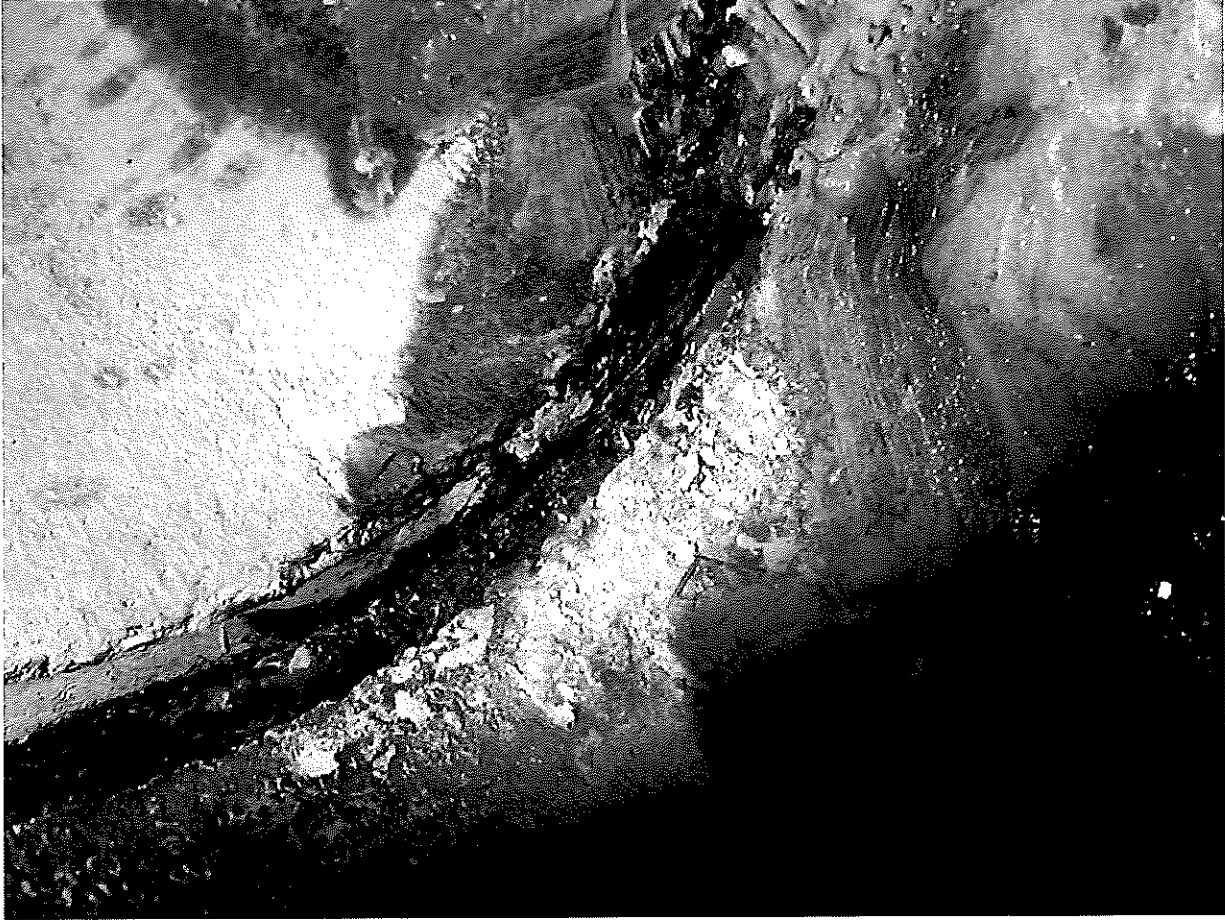
- Separated storm water pipes; and
- A sink hole has formed over the failed pipe.

SINKHOLE FLOW CHART

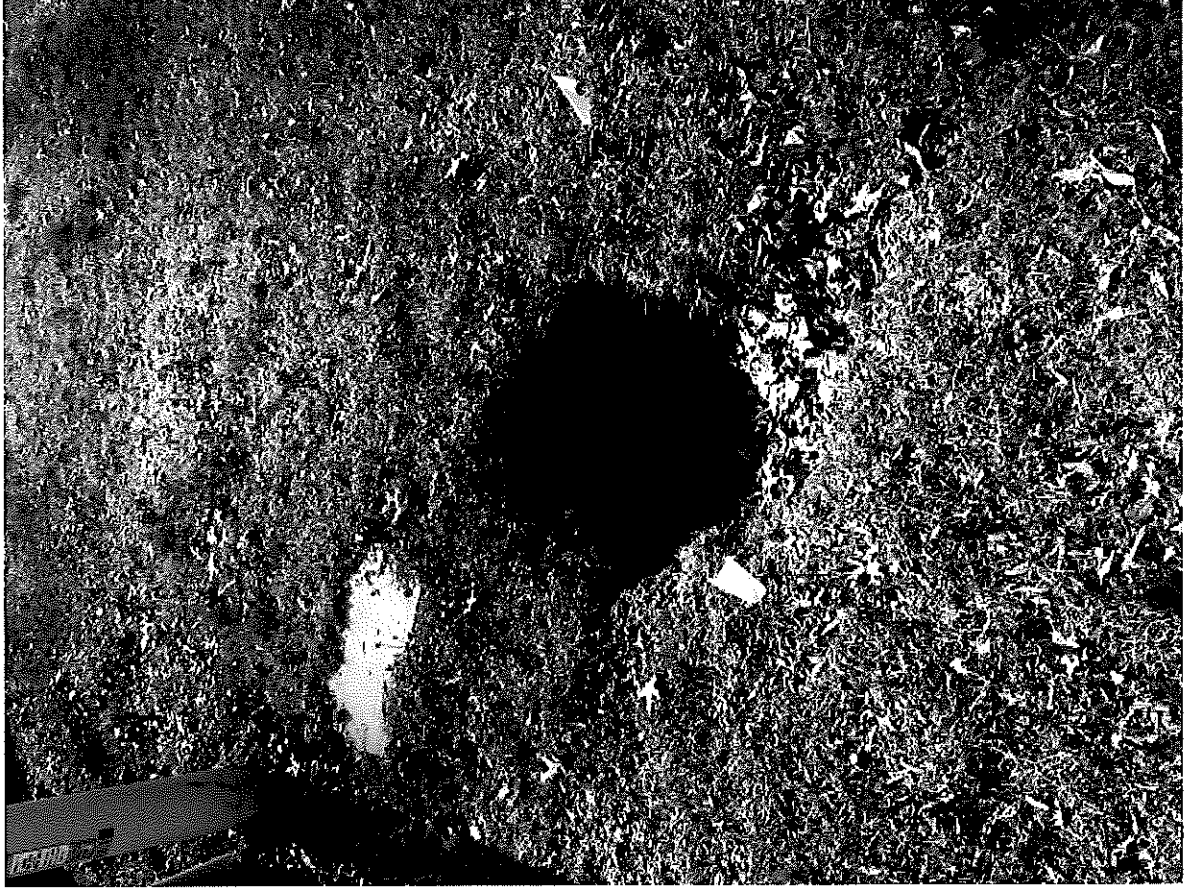
LOCATION: 119 Mason Way

DATE: 4/8/19





117/119 Mason Way. Pictures taken 02/19/2019.



117/119 Mason Way. Pictures taken 02/19/2019.



